

# Steam Box Industrial

Steam cleaner with stainless-steel body and boiler, designed for industrial use and able to deliver dry saturated steam at 183°C.

A sturdy structure, a fully electric operation and the compact size allows a usage in any environment, both outdoors (watertight protection IPX5) and indoors (e.g. in production lines).

All steam cleaner functions can be managed on the electronic control panel.

Steam cleaner



Body material

**Stainless steel AISI 304 BA**

Boiler material

**Stainless steel AISI 304**

(with interchangeable heating element)

Boiler volume

**11 L - 12 L - 13 L**

Tanks

Water: **20 L** | Det: **20 L**

Maximum output

**11 - 14,6 - 21,8 - 29 - 36,2 kW/h**

Boiler output

**10,8 - 14,4 - 21,6 - 28,8 - 36 kW/h**

Steam production

**291 - 388 - 582 - 776 - 970 g/min**

**17,5 - 23 - 35 - 46,5 - 58 Kg/h**

Power supply

**3~ 400 V - 50/60 Hz**

Steam temperature

**183°C**

Detergent temperature

**90°C - 160°C**

Power cord

**8 m**

Weight

**96 Kg**

Dimension

**110x55x80 cm**



Scan me!



## FEATURES



UNLIMITED  
STEAM AUTONOMY



WATER MAINS  
CONNECTION



AUTOMATIC  
WATER REFILLING



WATER  
TANK



DETERGENT  
TANK



POWER SWITCH  
REGULATION  
optional



DETERGENT  
INJECTION



OVERHEATED  
WATER INJECTION



CONTROL  
PANEL



BOILER CLEANING  
SIGNAL

# FEATURES



Power regulation / On - Off switch



Detergent tank - 20 liters



Hose holder



Detergent tank level indicator



Steam outlet 10bar - 12P



STEAM BOX VAC INDUSTRIAL  
Version with integrated industrial vacuum cleaner equipped with induction turbine.  
Vacuum drum capacity: 7,5 l - 14 l



Water tank - 20 liters



Control panel

Accessory baskets,  
extension tube holder &  
water tank level indicator



Water mains connection  
& hook for Vac Industrial



Anti-scratch rubber  
wheels 360°  
with safety brakes



Electric plugs - 8m:

- IEC309/16A Mod. 10,8 kW
- IEC309/32A Mod. 14,4 - 18 - 21,6 kW
- IEC309/63A Mod. 28,8 - 36 kW



## CONTROL PANEL

- Display to visualize temperature and pressure levels, working hours and boiler cleaning signal
- Buttons and indicators for the complete control of the parameters of the steam cleaner



# Optional accessories

Steam Box Industrial can be used with the following accessories:

## GEYSER 1 10bar Steam accessories



Steam hose  
5m - 8m



Window cleaner w/diffusor



Brush with bristles



100mm lance



Stainless steel threaded brushes



Stainless steel threaded flat nozzle



400mm lance



800mm lance



1200mm lance

## RADAMES 10bar Steam/vacuum accessories



Steam/vacuum hose  
4m - 8m - 12m



Extension tubes  
L. 480mm



Steam/vacuum turbo lance



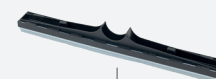
Floor tool L. 375mm



Brass/stainless steel brushes  
Ø28mm - Ø60mm



Squeegee/brush insert  
L.375mm - 2pcs



Squeegee/squeegee  
insert L.375mm



Steam/vacuum industrial brush  
L.530mm

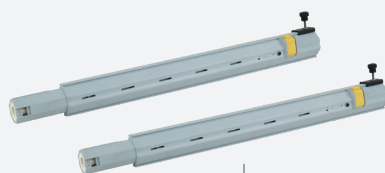


Stainless steel  
upholstery tool

## JULY 10 bar Steam accessories



Steam hose  
5m - 8m - 10m - 12m



Extension tubes  
L. 480mm



Steam lance



Rectangular brush



Stainless steel/brass  
brushes Ø28mm



Triangular brush



Stainless steel  
brush Ø60mm





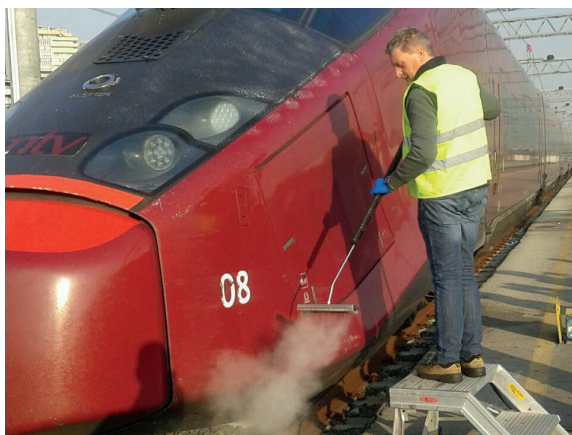
FOOD  
INDUSTRY



MECHANICAL  
INDUSTRY



TRANSPORT  
INDUSTRY



CONVEYOR  
BELT

